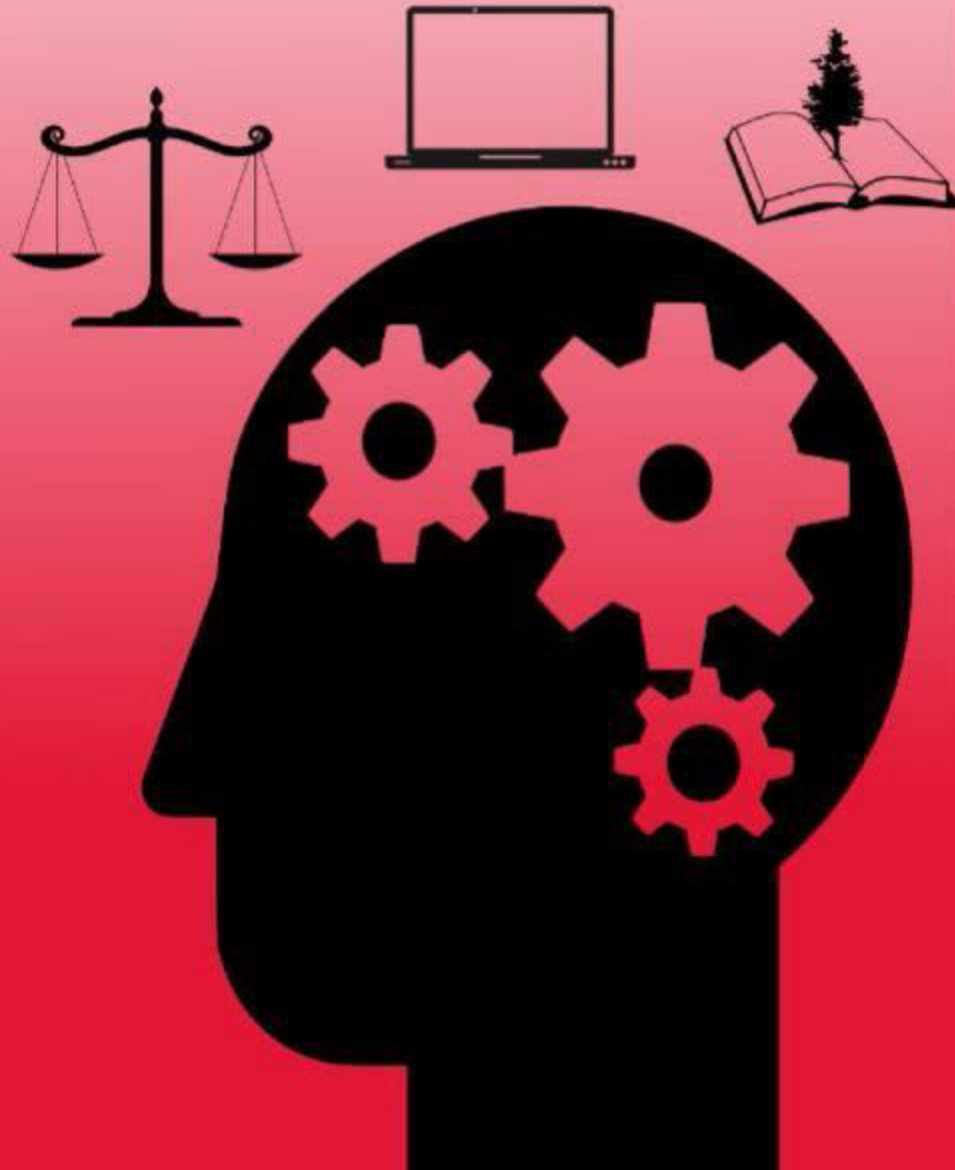


**THIS  
IS  
INTERDISCIPLINARY  
SOCIAL SCIENCE**

**YORK UNIVERSITY  
Department of Social Science  
Academic Calendar  
Fall/Winter 2017-2018**

**<http://iss.sosc.laps.yorku.ca>**



# Table of Contents

<b>I. Interdisciplinary Social Science (ISS): An overview</b>	<b>3</b>
<b>II. Guide to completing an ISS major</b>	
• Degree options	4
• ISS majors at a glance	6
• First-year program of study	8
• Second-year program of study	9
• Third-year program of study	10
• Fourth-year program of study	11
<b>III. Other resources</b>	
• Grade requirements	12
• Advising	13

For faculty profiles, please visit <http://iss.sosc.laps.yorku.ca/faculty-staff/>

# Interdisciplinary Social Science: An overview

- I. Our program challenges students to grapple with defining what it means to do **interdisciplinary** research and to develop their own interdisciplinary approaches to social inquiry.
- II. We help students think **critically** about a broad range of historical and contemporary issues related to social and political thought, social justice and diversity, sustainability and the environment, social exclusion and identity, diaspora and global development.
- III. An ISS major allows students to develop **transferable skills** for a range of different careers, as well as further studies at the graduate level. These skills include oral and written communication, research, analysis, critical thinking, problem-solving and time management.

# Degree options

## 1. **BA Program** (90 Credits)

- ✓ General Education: 21 Credits
- ✓ ISS: 36 Credits
- ✓ Outside the major: 18 Credits
- ✓ Free Choice: 15 Credits

## 2. **Honours BA** (120 Credits)

- ✓ General Education: 21 Credits
- ✓ ISS: 48 Credits
- ✓ Outside the major: 18 Credits
- ✓ Free Choice: 33 Credits

For degree checklists, please visit:

<http://iss.sosc.laps.yorku.ca/degree-requirements/degree-checklists/>

# Degree options

## 3. Honours Double Major (120 Credits)

- ✓ General Education: 21 Credits
- ✓ ISS: 42 Credits
- ✓ Second Major: 42 (or 48) Credits
- ✓ Free Choice: 15 (or 9) Credits

## 4. Honours Major/Minor (120 Credits)

- ✓ General Education: 21 Credits
- ✓ ISS: 42 Credits
- ✓ Minor outside ISS: See program specific criteria.
- ✓ Free Choice: 15-27 Credits

For degree checklists, please visit:

<http://iss.sosc.laps.yorku.ca/degree-requirements/degree-checklists/>

# BA at a glance (90 credits)

First Year	Second Year	Third Year
Must take the following course:	Must take <b>6 credit</b> core course <b>AND 12 credits</b> chosen from ISS course list:	Must take <b>12 credits</b> at the 3000 level chosen from ISS course list:
<b>Introduction to Social Science</b> (AP/SOSC 1000 9.0)	<b>Interdisciplinary Approaches to Social Inquiry</b> (AP/SOSC 2000 6.0)  <b>Sample</b> 2000 level ISS course options:  <b>Special Topics in ISS: Body, Power and Society</b> (AP/SOSC 2005 6.0)  <b>Critical Study of Health and Society</b> (AP/SOSC 2150 6.0)	<b>Sample</b> 3000 level ISS course options:  <b>Special Topics in ISS: Consequences of Colonialism</b> (AP/SOSC 3005 6.0)  <b>Gender and Development</b> (AP/SOSC 3543 6.0)

For a list of current ISS course offerings, please visit <http://iss.sosc.laps.yorku.ca/courses/courses/>

# Honours BA at a glance (120 credits)

First Year	Second Year	Third Year	Fourth Year
Must take the following course:	Must take <b>6 credit</b> core course <b>AND 6 credits</b> chosen from ISS course list:	Must take <b>6 credit</b> Theory list course <b>AND 12 credits</b> at the 3000 level chosen from ISS course list:	Must take <b>6 credit</b> Honours Seminar from the following options <b>AND 6 credits</b> from list of additional 4000 level courses:
<b>Introduction to Social Science</b> (AP/SOSC 1000 9.0)	<b>Interdisciplinary Approaches to Social Inquiry</b> (AP/SOSC 2000 6.0)	<b>Sample</b> Theory list course: <b>Ideology &amp; Everyday Life</b> (AP/SOSC 2560 6.0)	<ul style="list-style-type: none"> <li>• <b>Topics in Social Science Research</b> (AP/SOSC 4000 6.0)</li> <li>• <b>Critical Issues in Tourism Studies</b> (AP/SOSC 4001 6.0)</li> <li>• <b>Human Zoos: Spectacle and the Politics of Spectatorship</b> (AP/SOSC 4002 6.0)</li> <li>• <b>Social and Political Thought Seminar</b> (AP/SOSC 4511 6.0)</li> </ul>
	<b>Sample</b> 2000 level ISS course options:  <b>Special Topics in ISS: Body, Power and Society</b> (AP/SOSC 2005 6.0)	<b>Sample</b> 3000 level ISS course options:  <b>Special Topics in ISS: Consequences of Colonialism</b> (AP/SOSC 3005 6.0)	
			<b>Sample</b> additional 4000 level ISS major course: <b>Ethics and Economics</b> (AP/SOSC 4044 6.0)

For a list of current ISS course offerings, please visit <http://iss.sosc.laps.yorku.ca/courses/courses/>

# First-Year program of study

**AP/SOSC 1000  
9.0**

**Introduction to  
Social Science**

1000-level 9.0  
credit General  
Education  
course in

Social Science  
(SOSC)  
OR  
Humanities  
(HUMA)

1000-level 6.0  
credit General  
Education  
course in  
Natural Science  
(NATS)

1000-level 6.0-  
credit Elective  
(course outside  
major)

**Total for the year: 30 credits (6 ISS credits)**



## Second-Year program of study

**AP/SOSC 2000 6.0**

**Interdisciplinary  
Approaches to  
Social Inquiry**

1000-level 6.0-  
credit General  
Education  
course in

Social Science  
(SOSC)

OR

Humanities  
(HUMA)

**6 credits at  
2000-level (or  
above) from  
ISS course  
list\***

12 credits  
Elective  
at 2000-level  
(or above)

**Total for the year: 30 credits (12 ISS credits)**

**Completed: General Education requirement (21 credits)**

\*For a list of current ISS course offerings, please visit <http://iss.sosc.laps.yorku.ca/courses/courses/>

# Third-Year program of study

18 credits at **3000-level**  
from **ISS course list\***

(At least  
6 credits must come from  
Theory list for ISS  
Honours majors)

6.0 credit

Elective  
(for ISS single majors  
only)

OR

*Course for second  
major/minor*

6.0 credit

Elective  
(for ISS single majors  
only)

OR

*Course for second  
major/minor*

**Total for the year: 30 credits (18 ISS credits for single majors)**

**Completed by this year: at least 18 credits outside the ISS major**

\*For a list of current ISS course offerings, please visit <http://iss.sosc.laps.yorku.ca/courses/courses/>

# Fourth-Year program of study

**6.0 credit 4000-level ISS Honours Seminar**

**6.0 credit course from list of “additional 4000-level courses”**

(This can also be another ISS Honours seminar)

**6.0-credit 4000-level**

Elective (ISS single majors only)

**OR**

*Course for second major/minor*

Complete 12 credits to fulfill Elective requirements (for ISS single majors and those completing minors)

**OR**

*Second major requirements (for ISS double majors)*

**Total for the year: 30 credits (12 ISS credits)**

**Completed: 120 credits over 4 years, including:**

**At least 18 credits at the 4000 level and;**

**At least 18 additional credits at 3000 or 4000 level credits**

# Grade Requirements

In order to maintain good standing in the ISS program, students must maintain:

- ✓ an overall GPA of 4.0 (C) or above.

After first year, students must maintain an overall GPA of 5.0 (C+) or above in the subsequent years of study in order to graduate in the Honours program.

Students who fail to meet these grade requirements will be removed from the ISS Program.

Scale for Calculating Grade Point Average

Grade	Point Value	Definition
A+	9	exceptional
A	8	excellent
B+	7	very good
B	6	good
C+	5	competent
C	4	fairly competent
D+	3	passing
D	2	barely passing
E	1	marginally failing
F	0	failing

# Advising

Students in need of academic advising or advice can book an appointment with the ISS Program Coordinator and/or an academic advisor in the Department of Social Science.

## **ISS Program Coordinator**

Professor Matthew Tegelberg

717 South Ross

[mtegel@yorku.ca](mailto:mtegel@yorku.ca)

## **ISS Program Assistant**

S775 South Ross

416-736-2100 ex. 77796

[ssdegree@yorku.ca](mailto:ssdegree@yorku.ca)

## **Department of Social Science**

Elma Milasin

739 South Ross

416-736-2100 ex.20990

[emilasin@yorku.ca](mailto:emilasin@yorku.ca)

Chioma Nwabugwu

740 South Ross

416-736-2100 ex. 22760

[chiomanw@yorku.ca](mailto:chiomanw@yorku.ca)